

A Practical Guide to Carlson Software Fundamentals 2025

Copyright

Copyright © CADapult Press, Inc. 2024

All rights reserved. No part of this publication may be reproduced in any form, or by any means electronic, mechanical, recording, photocopying, or otherwise, without written permission from the publisher, except for brief quotations used in reviews, or for marketing purposes specific to the promotion of this work.

ISBN - Physical Book 978-1-934865-90-3

ISBN - Digital Book 978-1-934865-91-0

Although CADapult Press has made every attempt to ensure the accuracy of the contents of this book, the publisher and author make no representations or warranty with respect to accuracy or completeness of the contents in this book, including without limitation warranties of fitness for a particular purpose. The datasets included in this book are for training purposes only.

Carlson Survey and Carlson Civil are registered trademarks of Carlson Software. AutoCAD Civil 3D, AutoCAD Map 3D, and AutoCAD® are registered trademarks of Autodesk, Inc. All other trademarks are the property of their respective owners.

Published in the United States of America by:

CADapult Press, Inc,

(503) 266-2488

books@cadapult-software.com

Printed and manufactured in the United States of America

A Practical Guide to Carlson Software Fundamentals 2025

Introduction

Congratulations on choosing this course to help you learn how to use Carlson 2025. The term “practical” is used in the title because this course focuses on what you need to effectively use Carlson Software, and does not complicate your learning experience with unnecessary details of every feature in the product.

Each lesson contains the concepts and principles of each feature to provide you with the background and foundation of knowledge that you need to complete the lesson. You then work through real world exercises to reinforce your understanding and provide you with practice on common tasks that other professionals are performing with Carlson Software in the workplace every day.

You can take the lessons in this course in whatever order is appropriate for your personal needs. If you want to concentrate on specific features, the lesson for those features does not require that you complete prior lessons. With this course organization, you can customize your own individual approach to learning Carlson.

When you complete this course, you will have the background and knowledge to apply Carlson Software to your job tasks, and become more effective and productive in your job.

Course Objectives

The objectives of this course are performance based. In other words, once you have completed the course, you will be able to perform each objective listed. If you are already familiar with Carlson Software, you will be able to analyze your existing workflows, and make changes to improve your performance based on the tools and features that you learn and practice in this course.

After completing this course, you will be able to:

- Navigate the Pull-down Menus and Ribbon Menus
- Set up Carlson Software to use the Project approach
- Work with Coordinate Files
- Draw Points into the Drawing
- Edit Points in the Drawing and External Point Database
- Create Point Groups
- Prepare Surface Data using Points and 3D Polylines
- Create Surface Models
- View and Edit Surfaces
- Perform Surface Inquiries
- Generate and Label Contours
- Perform Basic Drawing and Editing in CAD
- Import and Export Land XML Data
- Work with Google Earth and World files
- Work with Centerlines
- Generate Linework Labels
- Convert Carlson Point Blocks to Civil 3D Points
- Convert Civil 3D Point, Surface, Alignment and Label objects to Carlson data

Prerequisites

Before starting this course, you should have a basic working knowledge of AutoCAD®. A deep understanding of AutoCAD is not required, but you should be able to:

- Pan and Zoom in the AutoCAD drawing screen.
- Describe what layers are in AutoCAD, and change the current layer.
- Create basic CAD geometry, such as lines, polylines and circles.
- Use Object Snaps.
- Describe what blocks are, and how to insert them.
- Perform basic CAD editing functions such as Erase, Copy, and Move.

If you are not familiar with these functions, you can refer to the AutoCAD Help system throughout the course to gain the fundamental skills needed to complete the exercises.

For a more in-depth AutoCAD tutorial check out our book, ***A Practical Guide to AutoCAD 2025***.

Conventions

The course uses the following icons and formatting to draw your attention to guidelines that increase your effectiveness in Carlson Software, or provide deeper insight into a subject.



The magnifying glass indicates that this text provides deeper insights into the subject.



The compass indicates that this text provides guidance that is based on the experience of other users of Carlson Software. This guidance is often in the form of how to perform a task more efficiently.

Downloading and Installing the Datasets

In order to perform the exercises in this book, you must download a zip file and install the datasets.

Type the address below into your web browser to load the page where you can download the dataset.

www.cadapult-software.com/data

Unzip the Files

Unzip the file **APG_CARLSON_FUND_2025.zip** directly to the C drive. The dataset will be copied to the folder:

C:\Carlson Projects

A folder called **APG 2025 Data** is created that contains several folders with source data for the exercises in this book.

There are also folders created called **APG 2025 Lesson X_X** These folders contain project files and drawings where the lesson number of the folder corresponds to the lesson numbers in the book. This will allow you to jump in at the beginning of many of the lessons in the book, and do just the specific exercises that you want, if you do not have time to work through the book from cover to cover.

Exercises

The exercises in this course have been designed to represent common tasks that are performed by civil engineers, surveyors, designers and drafters. The data included in the exercises are typical drawings, point files and other data used by professionals like you. Exercises provide higher level process information throughout the exercise tasks. You are given information about not only what to do, but why you are doing it. Many images are included to help guide you.

Exercise Data

I would like to thank the City of Springfield, Oregon for providing the data for this book. The dataset provided is for illustration purposes only. While it is based on real world information to add relevance to the exercises, it has been altered and modified to more effectively demonstrate certain features as well as to protect all parties involved. The data should not be used for any project work and may not represent actual places or things. It is prohibited to redistribute this data beyond your personal use as a component of training.

Table of Contents

Chapter 1	A First Look at Carlson Software 2025	1
1.1	Lesson: A Guided Tour through the Pull-down Menus	2
1.2	Lesson: A Guided Tour through the Ribbon Menus	12
Chapter 2	Working with Data, Settings, and Start Ups	17
2.1	Lesson: Working with External Data	18
2.1.1	Setting up Carlson desktop applications to Work with External Data	22
2.2	Lesson: Setting Up General Settings	27
2.2.1	Working with General Settings	30
2.3	Lesson: Creating a New Drawing	32
2.3.1	Starting Up a New Drawing	36
2.3.2	Defining Text Styles	39
Chapter 3	Working with Points	41
3.1	Lesson: Introduction to Point Data	42
3.2	Lesson: Importing a Text/ASCII File	44
3.2.1	Importing a Text/ASCII File	48
3.3	Lesson: Point Defaults	53
3.3.1	Setting Up Point Defaults	56
3.4	Lesson: Draw - Locate Points	58
3.4.1	Draw Points in a Drawing	61
3.4.2	Creating new Points with Draw – Locate Points	64
3.5	Lesson: Controlling Point Display	67
3.5.1	Scaling Attributes	71
3.5.2	Using Dynamic Point Attributes	73
3.5.3	Moving Attributes	74
3.5.4	Editing Specific Attributes	75
3.6	Lesson: Editing Point Data	77
3.6.1	Editing Point Data with the Edit Points command	79
3.6.2	Editing Point Data with the Edit Point Attributes command	81
3.7	Lesson: Erasing Points	83
3.7.1	Erasing Point Blocks from a Drawing	84
3.7.2	Deleting Point Data from the External Point Database	87
3.8	Lesson: Using Point Groups	89
3.8.1	Creating a Point Group	92

3.8.2	Drawing Points by Point Group	95
Chapter 4	Working with Surfaces	99
4.1	Lesson: Introduction to Surfaces	100
4.2	Lesson: Preparing Surface Data	102
4.2.1	Creating a New Drawing for the Surface	106
4.2.2	Creating a Point Group to Be Used as Surface Data	109
4.2.3	Creating a Point Group to Connect with 3D Polylines	112
4.2.4	Drawing 3D Polylines by Point Number	114
4.2.5	Drawing 3D Polylines by Point Selection	118
4.3	Lesson: Using Triangulate and Contour	121
4.3.1	Using Triangulate and Contour	127
4.4	Lesson: Working with Contour Labels	136
4.4.1	Adding Contour Labels	138
4.4.2	Moving Contour labels	139
4.5	Lesson: Viewing Surfaces	140
4.5.1	Using the Surface File Viewer	143
4.5.2	Using the Drawing Viewer	144
4.6	Lesson: Editing Surfaces	146
4.6.1	Editing a Surface with the Surface Manager	149
4.7	Lesson: Surface Inquiries	154
4.7.1	Quick Profile	156
4.7.2	Creating Spot Elevations	160
4.7.3	Using the Drawing Inspector to show Surface Elevation	162
4.7.4	Slopes Zone Analysis	163
Chapter 5	Basic CAD Drawing and Editing in Carlson Software	167
5.1	Lesson: Introduction to Basic CAD Drawing and Editing	168
5.2	Lesson: Basic Cad Drawing and Editing	180
5.2.1	Initial Drawing Setup	181
5.2.2	Drawing Polylines by Point Group	185
5.2.3	Edit a polyline	187
5.2.4	Drawing an Arc	188
5.2.5	Draw a 2D Polyline from points	188
5.2.6	Offset a Polyline	189
5.2.7	Extending and Trimming Entities	190
5.2.8	Lengthen a Line	191
5.2.9	Drawing Lines by Angle and Distance	191

5.2.10	Draw Polyline by Nearest Found	194
5.2.11	Adding Symbols	195
5.2.12	Drawing a Rectangle.....	197
5.2.13	Drawing Special Line Types	198
5.2.14	Inserting an External DWG File (with AutoCAD)	199
5.2.15	Inserting an External DWG File (with IntelliCAD)	201
5.3	Lesson: Drawing Presentation and Creating a Final Plan.....	203
5.3.1	Drawing Orientation	207
5.3.2	Adding Text.....	208
5.3.3	Drawing a Hatch Pattern (with AutoCAD).....	214
5.3.4	Drawing a Hatch Pattern (with IntelliCAD).....	216
5.3.5	Drawing Variable Offsets	217
5.3.6	Create/Change Layers by Selection	218
5.3.7	Adding Dimensions and Leaders	219
5.3.8	Drawing a Border and Title Block	225
5.3.9	Adding a North Arrow.....	227
5.3.10	Adding a Bar Scale	229
Chapter 6	More Essential Tools.....	231
6.1	Lesson: Using Drawing Cleanup	232
6.1.1	Using Drawing Cleanup	234
6.2	Lesson: Labeling Lines	236
6.2.1	Set Linework Label Linking	243
6.2.2	Annotate Defaults.....	244
6.2.3	Auto Annotate	246
6.3	Lesson: Annotative Text and Points	248
6.3.1	Setting up Annotative Text and Points.....	250
6.3.2	Annotate the Plan.....	253
6.3.3	Change the Annotative Scale	255
6.4	Lesson: Working with Centerlines	256
6.4.1	Define a Centerline	259
6.4.2	Edit a Centerline.....	260
6.4.3	Station a Centerline.....	263
6.4.4	Export a Centerline	265
6.5	Lesson: LandXML Export/Import.....	266
6.5.1	LandXML Export	269
6.5.2	LandXML Import.....	272

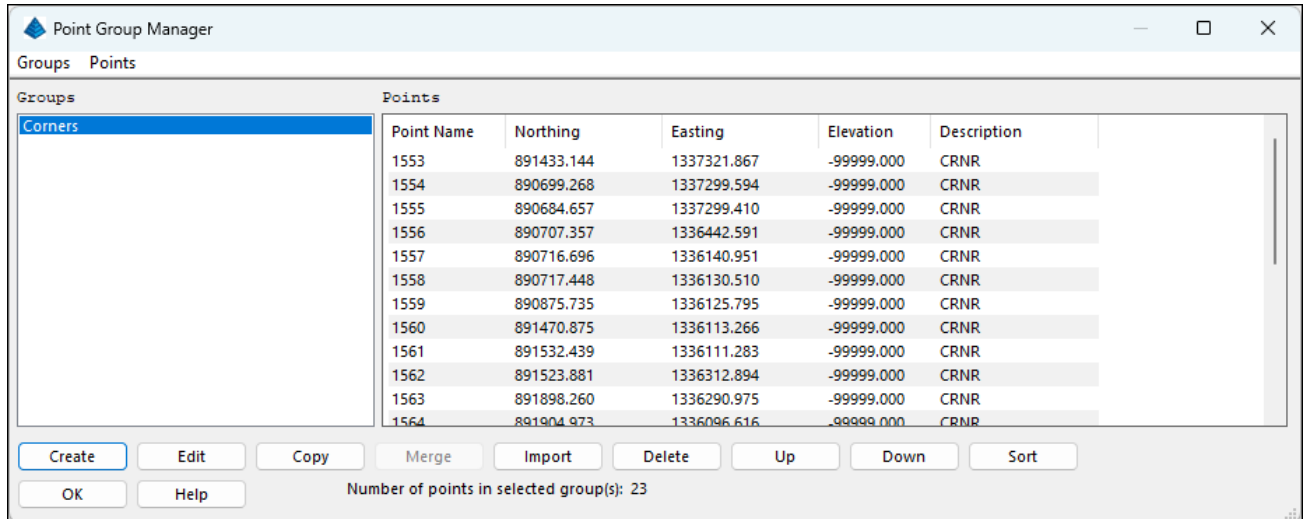
6.6 Lesson: Google Earth Export/Import.....	276
6.6.1 Google Earth Export	278
6.6.2 Google Earth Import	282
6.7 Lesson: Working with Quick Keys.....	284
6.7.1 Creating Quick Keys.....	286
6.8 Lesson: Working with the Symbol Library.....	288
6.8.1 Editing the Symbol Library.....	290
6.9 Lesson: Importing Esri SHP Files	293
6.9.1 Configure GIS Settings.....	295
6.9.2 Import Esri SHP.....	297
6.9.3 Viewing the GIS Data	301
6.10 Lesson: Place Image by World File	303
6.10.1 Place Image by World File.....	306
6.11 Lesson: Working with Civil 3D Data.....	308
6.11.1 Create a Drawing with Civil 3D Point Objects	309
6.11.2 Import a Drawing with Civil 3D Data.....	311
Index	313

Sample Lesson

3.8 Lesson: Using Point Groups

Introduction

In this lesson we look at the use of Point Groups to organize your point data, and some of the subsequent uses of those groups.



Key Concepts

Concepts and key terms covered in this lesson are:

- Point Groups
- Filters
- Applications of Point Groups

Objectives

After completing this lesson, you will be able to:

- Learn what Point Groups are
- Learn how to Create Point Groups
- Learn various applications of Point Groups

Advantages of using Point Groups

Point Groups are a powerful and versatile tool to organize your point data. Some uses of Point Groups include:

- Controlling Point Display
- Editing Points
- Drawing Points
- Field to Finish
- Selecting Points to build a Surface
- Exporting specific Points
- Creating Point Tables
- Generating Reports

Creating Point Groups

Point Groups are saved selection sets of points. They can be created by setting up a query (or filter) that sorts through all the points in the current .CRD and selects the ones that match the criteria. Point groups can be based on a variety of criteria including point numbers, point elevations, point descriptions and logical combinations thereof.

The *New Point Group* dialog box consists of an *Include* tab and an *Exclude* tab. First the filtering criteria specified on the *Include* tab is applied to the entire current coordinate file. The resulting list of points is created and held in memory. Note that on the *Include* tab, all specified filter criteria must be met for a point to be included.

Components of the Query can include any combination of:

- A Range of point numbers, selected from the Drawing or the .CRD, found in the Drawing or the .CRD that fall within a drawn Circle, or found within the Drawing or the .CRD within a drawn Polyline
- Elevation Range
- Descriptions
- All Points in the database

Next, the filtering criteria specified on the *Exclude* tab is applied to that temporary list. Any points in the list that match the exclude criteria are removed from the list to create the final Point Group.

On the *Exclude* tab, the user specifies whether the points to be excluded must match *All* of the filter criteria, or *Any* of the filtering criteria. Using all of these variables in different combinations can produce a very specific set of points.

Components of the Query can exclude any combination of:

- A range of point numbers, using the same methods as described for Include
- Elevation Range
- Descriptions

How Point Groups Work

The parameters that define Point Groups are stored in files with a .GRP file extension, and the same filename as the .CRD coordinate file they are to be applied to. Each Point Group file is associated with one and only one CRD file, as determined by the filename. For example, Test.grp will only refer to points in Test.crd in the same directory.

Each Point Group file contains a number of Point Groups. Each Point Group contains rules for selecting the points within the *.crd file. This file is not intended to be edited manually. The Point Group Manager in Carlson Software is the correct tool to use to edit the Point Group rules and/or to add or remove Point Groups.



Point Groups are dynamic, inasmuch as the .CRD file is read in its current state whenever Point Groups are employed. So if Points that belong in a specific Point Group are added to or deleted from the .CRD, the next time Point Groups are used, they will be updated to the current state of the .CRD.

Exercises: Working with Point Groups

In these exercises you create a Point Groups, using filtering of descriptions, and then use the new Point Group with *Draw-Locate* to draw that specific set of Points in the Drawing.

You do the following:

- Create a Point Group
- Draw a Point Group

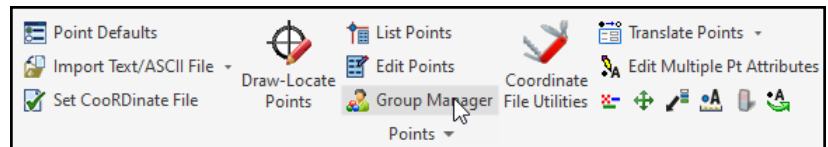
3.8.1 Creating a Point Group

1. Continue working in the drawing **Basemap.dwg**.

If you have not completed the previous lessons:

Open *3_8.dwg* from the project folder *APG 2025 Lesson 3_8*.

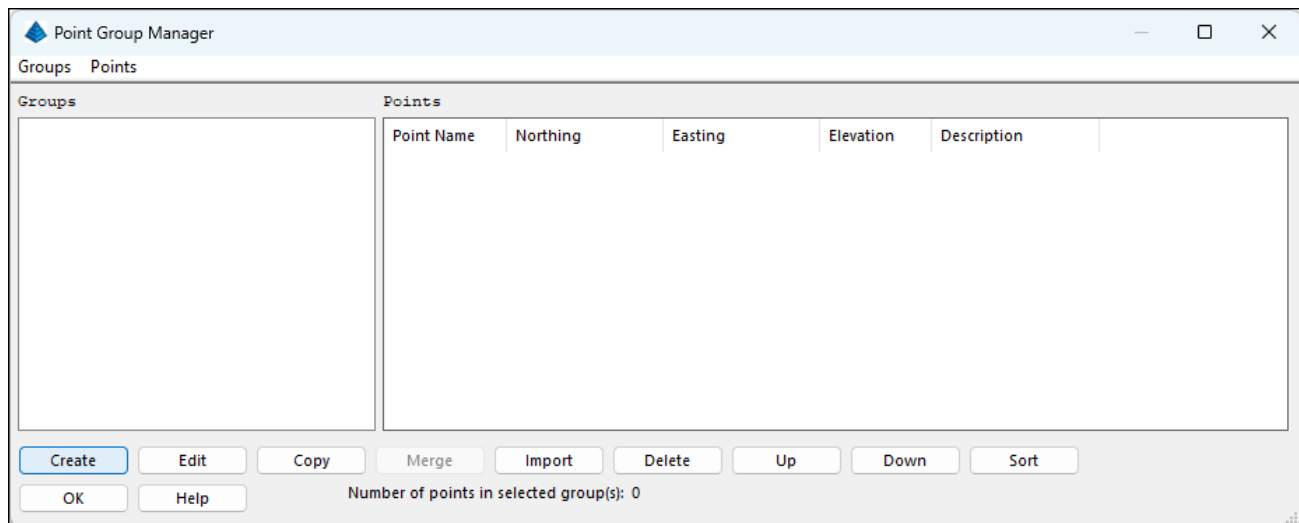
2. Select **Ribbon: Points**
⇒ **Points** ⇒ **Group Manager**.



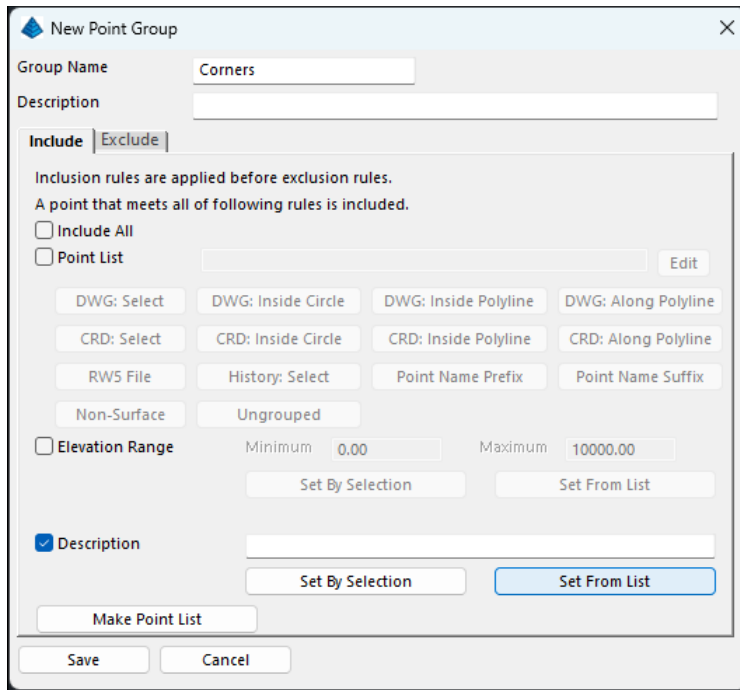
Alternatively, from the pull-down menu:

Select **Points** ⇒ **Point Group Manager**.

The *Point Group Manager* opens.

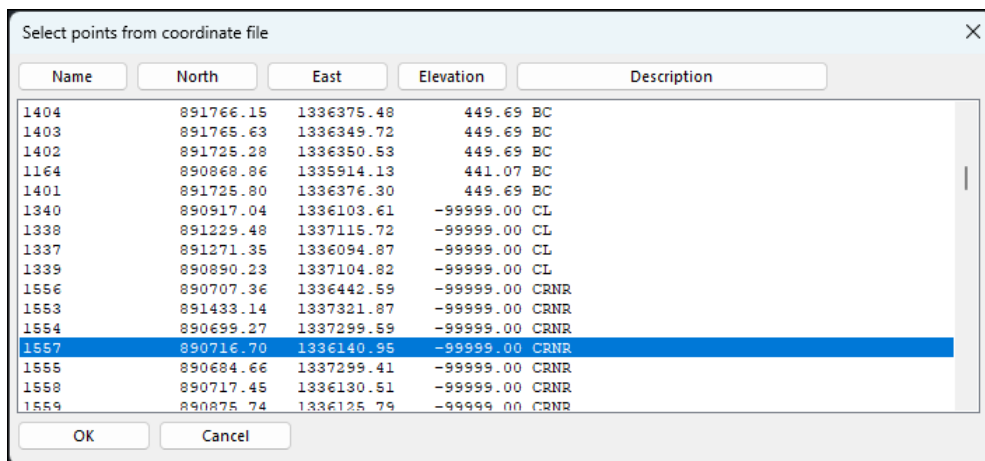


3. Click <<**Create**>>.

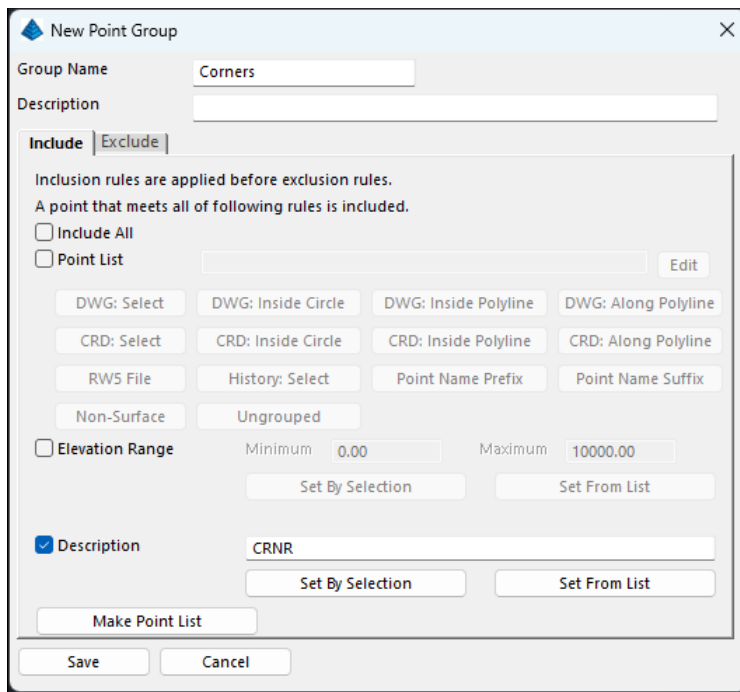


4. In the *New Point Group* dialog box for the **Group Name** enter **Corners**.
5. On the *Include* tab disable **Include All**.
6. Enable **Description**.
7. Click <<**Set From List**>>.

This opens the *Select points from coordinate file* dialog box. Here you can see all the points in the current .CRD file, sort them, and select the descriptions that you want to use to create the point group. It saves time and reduces errors by allowing you to see the description of points that are in the point database so you don't have to type them in from memory.



8. Click <<**Description**>> to sort the list by the description.
9. Find a point with a **CRNR** description and select it.
10. Click <<**OK**>>.



New Point Group

Group Name:

Description:

Include | Exclude

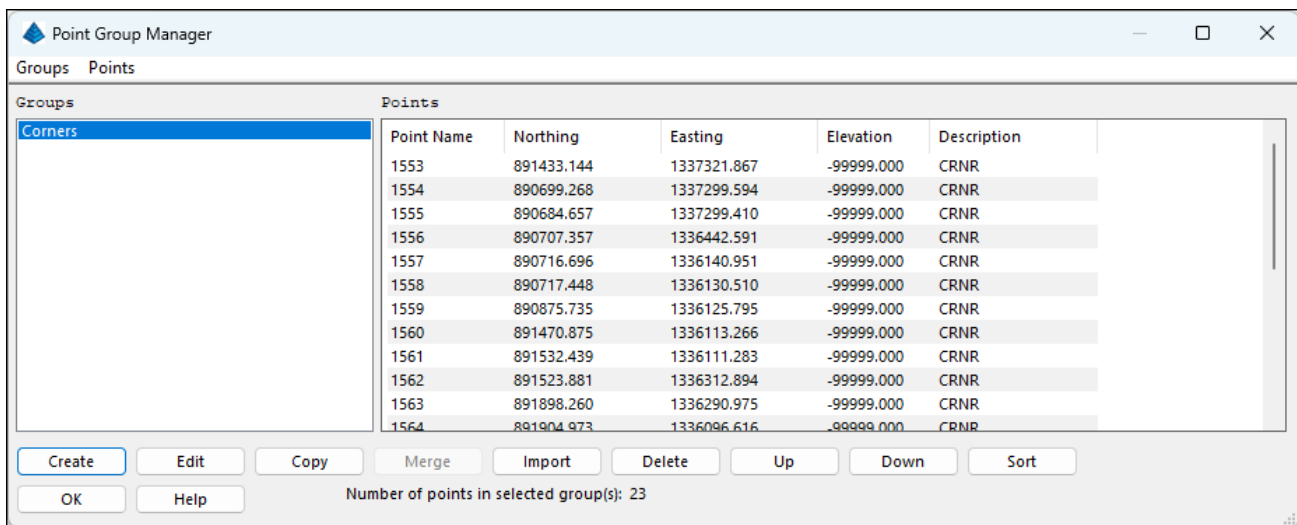
Inclusion rules are applied before exclusion rules.
A point that meets all of following rules is included.

Include All
 Point List

Elevation Range Minimum: Maximum:

Description

11. Back in the *New Point Group* dialog box click <<**Save**>>.



Point Group Manager

Groups Points

Point Name	Northing	Easting	Elevation	Description
1553	891433.144	1337321.867	-99999.000	CRNR
1554	890699.268	1337299.594	-99999.000	CRNR
1555	890684.657	1337299.410	-99999.000	CRNR
1556	890707.357	1336442.591	-99999.000	CRNR
1557	890716.696	1336140.951	-99999.000	CRNR
1558	890717.448	1336130.510	-99999.000	CRNR
1559	890875.735	1336125.795	-99999.000	CRNR
1560	891470.875	1336113.266	-99999.000	CRNR
1561	891532.439	1336111.283	-99999.000	CRNR
1562	891523.881	1336312.894	-99999.000	CRNR
1563	891898.260	1336290.975	-99999.000	CRNR
1564	891904.973	1336096.616	-99999.000	CRNR

Number of points in selected group(s): 23

12. In the *Point Group Manager* notice the new point group *Corners*. It contains 23 points and is limited to points with the description *CRNR*.

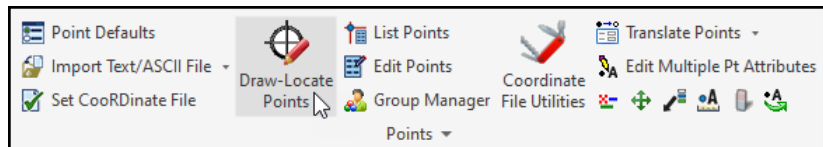
13. Click <<**OK**>>.

3.8.2 Drawing Points by Point Group

1. Continue working in the drawing from the previous exercise.
2. From the pull-down menu: Select **Points** ⇒ **Erase Point**.
3. At the command line respond to the prompts as follows:
4. Select points from screen, group or by point number [<Screen>/Group/Number]? **S**
5. Graphically select all the points in the drawing and press **Enter**.
6. Delete points from coordinate file [Yes/<No>]? **N**
7. Delete point symbols, attributes or both [<Both>/Symbols/Attributes]? **B**

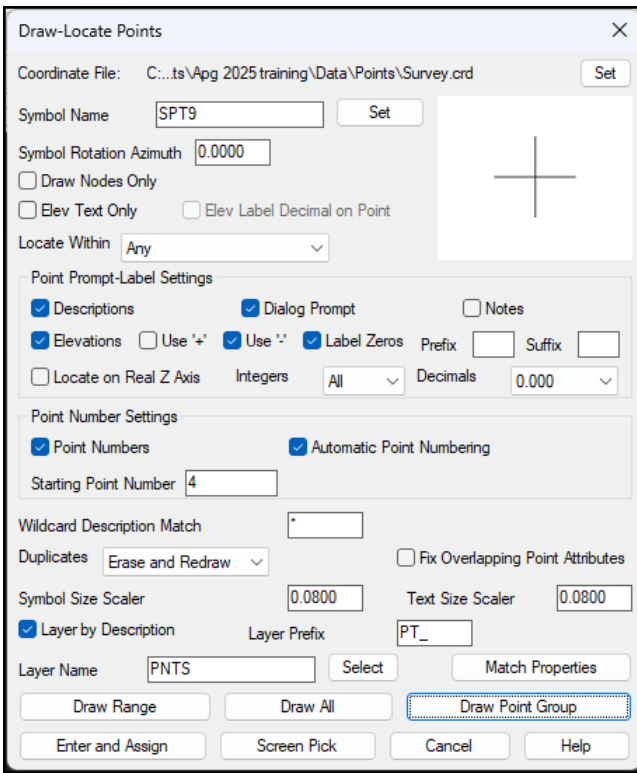
All the points are now removed from the drawing, however, they still exist in the point database.

8. Select **Ribbon: Points**
⇒ **Points** ⇒ **Draw –**
Locate Points.



Alternatively, from the pull-down menu:
Select **Points** ⇒ **Draw – Locate Points**.

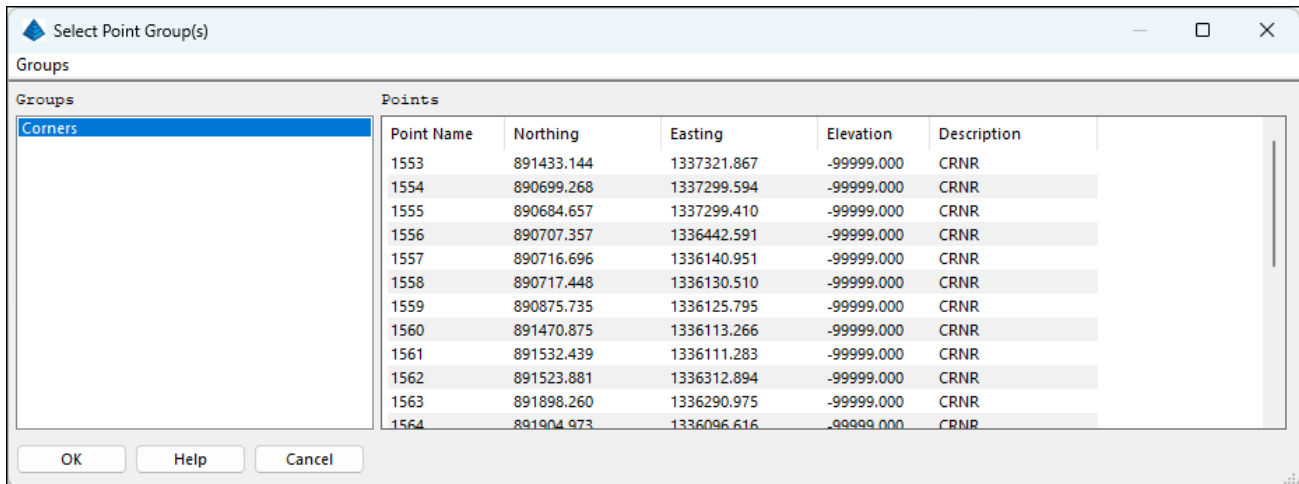
The *Draw-Locate Points* dialog box opens.



Many of the settings within the *Draw-Locate Points* dialog box are already set to the choices you made in the *Point Defaults* dialog. However, they can be changed here, and the changes will be used for this specific point creation.

9. Confirm **Layer by Description** is enabled.
10. Confirm the **Layer Prefix** is set to **PT_**.
11. Confirm the remaining settings are set like the graphic above.
12. Click <<**Draw Point Group**>>.

This opens the *Select Point Group(s)* dialog box. Here you can select one or more point groups to draw into the drawing.



13. Confirm the point group **Corners** is selected.

14. Click <<OK>>.

Only the points representing corners are created in the drawing and should look like the graphic below.



Lesson Review

In this lesson you learned about using *Points Groups* in *Carlson Software*. First you created a *Point Group* by including all the points in the .CRD file with a certain description. Then you used that *Point Group* to draw the points into the drawing.

Chapter Review

In this chapter you learned about many aspects of working with points in *Carlson Software*. You looked at the use of the external point database, the coordinate file, known as the Carlson .CRD file. You also learned about several methods for the creation of point blocks in the drawing to represent the records in the external point database. You then learned how to edit the point blocks in the point data, how to erase point blocks and point data.

A solid understanding of the use of points in Carlson is essential. Practice these exercises and try other commands on the points menu that we did not cover. You are on your way to becoming a Carlson Software master and being a master of points is a solid step along the way.

Next we look at creating Surfaces using points and break lines.

Index

3D Polylines	104	Faults	103
Annotate Defaults	237	Fence	178
Annotation Scale	249	Field to Finish for Point Styles	55
Annotative Points	55	Fixed Folder	19
Annotative Text	248	General Settings	27, 28
Attribute Layout ID	55	GIS Features File	294
Auto Annotate	240	GIS Inspector Settings	301
Bar Scale	229	GIS Settings	294
Bitonal	305	Google Earth	277
Blocks	176	Grey Scale	305
Breakline Generation	103	Hatch	214, 216
Breaklines	103, 104	Hatch Patterns	206
Carlson Software 3D Viewer	141, 142	Header Lines	46
Centerline	257	Ignore Zero Elevations	123
Civil 3D	309	Importing Esri SHP Files	293
Civil 3D Objects	309	Importing a Text/ASCII File	44
Contour Label Options	137	Importing LandXML Data	268
Contour Labels	99, 136	Inclusion/Exclusion Areas	123
Contour Settings	124	Input-Edit Centerline File	257
Contour Smoothing	124	IntelliCAD	1
Contours	103	KML	277
Correlation Files	305	KMZ	277
Crossing polygon	179	Label Contours	125
Data Folder Setup	19	Labeling Lines	236
Data Type Sub-Folders	20	LandXML	267
Deleting Point Data	84	Layer for Points	55
Design Centerline	258	Leaders	219
Dimensions	219	Link Labels with Linework	237
Draw Contours	124	Listing Points	45
Draw Points	47	Locate on Real Z Axis	54, 170
Drawing Cleanup	232, 233	Maximum Triangle Length	123
Drawing Coordinate Base	169	Move Point Attributes with Leader	69
Drawing Folder	19	Multiline Text	208
Drawing Inspector	60, 155	North Arrow	227
Drawing Orientation	204	Object Linking	29
Drawing Template	174	Osnap	177
Drawing Viewer	142, 143	Place Image by World File	303
Drawing with accuracy	177	Point Blocks	43
Draw-Locate Points	59	Point Data	43
Edit Multiple Point Attributes	70	Point Defaults	53, 54
Edit Point Attributes	8	Point Display	67
Editing Point Data	77, 78	Point Groups	47, 89, 90
Editing Surfaces	146	Point Number Settings	55
Entering Angles	169	Point Protect	47
Erasing Points	83	Points	41
Esnap	177	Polyline 3D Options	105
External Data	18	Polyline to Centerline File	257

Polyline to Special Line	174	Surface Data Types	103
Printing	176	Surface Editing	147
Project Folder	19	Surface File Viewer	141, 143
Project Sub-Folders	20	Surface Inquiries	154
Quick Keys	284	Surface Manager	147, 149
Quick Keys Editor	285	Surface Manager Properties	148
Quick Profile	155, 156	Surfaces	99
Raster Images	304	Symbol Library	288, 289
Resize Point Attributes	68	Templates	174
Ribbon	13	Text Styles	35, 205
Running Osnaps	178	Text/ASCII File	45, 46
Settings Folder	21	Title Block	225
Shrink-Wrap	123	Triangulate and Contour	99, 121, 127
Simplify Surface	123	Triangulation File	122
Slope Zone Analysis	155	Variable Offsets	217
Special Line Types	173	Vector Objects	304
Spot Elevation	155, 160	Viewing Surfaces	140
Standards	174	Wildcard	46
Startup Drawing Wizard	33	Window polygon	179
Startup Project/Data Folder	21	Working with 3D and 2D Data	170
Station a Centerline	263		