



# **A Practical Guide to Carlson Software Fundamentals 2018**

**Rick Ellis  
Douglas L. Aaberg, PLS  
Duke Gardner**



A CADapult Press Publication

---

## Copyright

Copyright © CADapult Press, Inc. 2017

All rights reserved. No part of this publication may be reproduced in any form, or by any means electronic, mechanical, recording, photocopying, or otherwise, without written permission from the publisher, except for brief quotations used in reviews, or for marketing purposes specific to the promotion of this work.

ISBN: 978-1-934865-35-4

Although Cadapult Press has made every attempt to ensure the accuracy of the contents of this book, the publisher and author make no representations or warranty with respect to accuracy or completeness of the contents in this book, including without limitation warranties of fitness for a particular purpose. The datasets included in this book are for training purposes only.

Carlson Survey and Carlson Civil are registered trademarks of Carlson Software. AutoCAD Civil 3D, AutoCAD Map 3D, and AutoCAD® are registered trademarks of Autodesk, Inc. All other trademarks are the property of their respective owners.

Published in the United States of America by:

Cadapult Press, Inc,

(503) 829-8929

[books@cadapult-software.com](mailto:books@cadapult-software.com)

Printed and manufactured in the United States of America

## About the Author

**Rick Ellis** has worked with and taught Civil/Survey CAD software since the mid-90s. He is the Author of several critically acclaimed books on AutoCAD Map 3D and other CAD packages. He continues to work on projects in a production environment, in addition to teaching classes to organizations both large and small.

This practical background and approach has made him an award winning speaker at Autodesk University, a member of the national speaker team for the AUGI CAD Camps and a sought after instructor by organizations around the world.

Rick can be reached at: [rick@cadapult-software.com](mailto:rick@cadapult-software.com)

**Douglas L. Aaberg, PLS** is a licensed Professional Land Surveyor in the Commonwealth of Massachusetts and in the State of Colorado. His career in the Land Surveying/Civil Engineering business spans four decades. Having used Carlson Software exclusively since 1998, Doug is a recognized expert in applying the continually expanding capability of Carlson's programming to the everyday "work flow" of land surveyors and engineers. After owning and operating his own company for fifteen years, Doug now dedicates his time consulting to both large and small land survey and engineering firms through on-site training, remote support and individually tailored documentation.

**Duke Gardner** has served the land surveying and civil engineering communities for over 35 years in a wide variety of support roles. His focus on the theory as well as the practice skills needed to achieve successful implementation made him an excellent partner in the author team for this guide.

## Acknowledgements

Thank you to Carlson Software for their cooperation. A special thanks to Gary Rosen and Lauren Lax from Carlson Software for their assistance and encouragement. Without it this book would not have been possible.

## Exercise Data

I would like to thank the City of Springfield, Oregon for providing the data for this book. The dataset provided is for illustration purposes only. While it is based on real world information to add relevance to the exercises, it has been altered and modified to more effectively demonstrate certain features as well as to protect all parties involved. The data should not be used for any project work and may not represent actual places or things. It is prohibited to redistribute this data beyond your personal use as a component of training.

# **A Practical Guide to Carlson Software Fundamentals 2018**

## **Introduction**

Congratulations on choosing this course to help you learn how to use Carlson 2018. The term “practical” is used in the title because this course focuses on what you need to effectively use Carlson Software, and does not complicate your learning experience with unnecessary details of every feature in the product.

Each lesson contains the concepts and principles of each feature to provide you with the background and foundation of knowledge that you need to complete the lesson. You then work through real world exercises to reinforce your understanding and provide you with practice on common tasks that other professionals are performing with Carlson Software in the workplace every day.

You can take the lessons in this course in whatever order is appropriate for your personal needs. If you want to concentrate on specific features, the lesson for those features does not require that you complete prior lessons. With this course organization, you can customize your own individual approach to learning Carlson.

When you complete this course, you will have the background and knowledge to apply Carlson Software to your job tasks, and become more effective and productive in your job.

## **Course Objectives**

The objectives of this course are performance based. In other words, once you have completed the course, you will be able to perform each objective listed. If you are already familiar with Carlson Software, you will be able to analyze your existing workflows, and make changes to improve your performance based on the tools and features that you learn and practice in this course.

After completing this course, you will be able to:

- Navigate the Pull-down Menus and Ribbon Menus
- Set up Carlson Software to use the Project approach
- Work with Coordinate Files
- Draw Points into the Drawing
- Edit Points in the Drawing and External Point Database
- Create Point Groups
- Prepare Surface Data using Points and 3D Polylines
- Create Surface Models
- View and Edit Surfaces
- Perform Surface Inquiries
- Generate and Label Contours
- Perform Basic Drawing and Editing in CAD
- Import and Export Land XML Data
- Work with Google Earth and World files
- Work with Centerlines
- Generate Linework Labels
- Convert Carlson Point Blocks to Civil 3D Points
- Convert Civil 3D Point, Surface, Alignment and Label objects to Carlson data

## Prerequisites

Before starting this course, you should have a basic working knowledge of AutoCAD®. A deep understanding of AutoCAD is not required, but you should be able to:

- Pan and Zoom in the AutoCAD drawing screen.
- Describe what layers are in AutoCAD, and change the current layer.
- Create basic CAD geometry, such as lines, polylines and circles.
- Use Object Snaps.
- Describe what blocks are, and how to insert them.
- Perform basic CAD editing functions such as Erase, Copy, and Move.

If you are not familiar with these functions, you can refer to the AutoCAD Help system throughout the course to gain the fundamental skills needed to complete the exercises.

## Conventions

The course uses the following icons and formatting to draw your attention to guidelines that increase your effectiveness in Carlson Software, or provide deeper insight into a subject.



The magnifying glass indicates that this text provides deeper insights into the subject.



The compass indicates that this text provides guidance that is based on the experience of other users of Carlson Software. This guidance is often in the form of how to perform a task more efficiently.

# Downloading and Installing the Datasets

In order to perform the exercises in this book, you must download a zip file and install the datasets.

Type the address below into your web browser to load the page where you can download the dataset.

**[www.cadapult-software.com/data](http://www.cadapult-software.com/data)**

## Unzip the Files

Unzip the file **APG\_CARLSON\_FUND\_2018.zip** directly to the C drive. The dataset will be copied to the folder:

**C:\Carlson Projects\**

A folder called **APG 2018 Data** is created that contains several folders with source data for the exercises in this book.

There are also folders created called **APG 2018 Lesson X\_X** These folders contain project files and drawings where the lesson number of the folder corresponds to the lesson numbers in the book. This will allow you to jump in at the beginning of many of the lessons in the book, and do just the specific exercises that you want, if you do not have time to work through the book from cover to cover.

## Exercises

The exercises in this course have been designed to represent common tasks that are performed by civil engineers, surveyors, designers and drafters. The data included in the exercises are typical drawings, point files and other data used by professionals like you. Exercises provide higher level process information throughout the exercise tasks. You are given information about not only what to do, but why you are doing it. Many images are included to help guide you.

# Table of Contents

<b>Chapter 1</b>	<b>A First Look at Carlson Software 2018</b>	<b>1</b>
1.1	Lesson: A Guided Tour through the Pull-down Menus	2
1.2	Lesson: A Guided Tour through the Ribbon Menus	12
<b>Chapter 2</b>	<b>Working with Data, Settings, and Start Ups</b>	<b>17</b>
2.1	Lesson: Working with External Data	18
2.1.1	Setting up Carlson desktop applications to Work with External Data	22
2.2	Lesson: Setting Up General Settings	28
2.2.1	Working with General Settings	31
2.3	Lesson: Creating a New Drawing	34
2.3.1	Starting Up a New Drawing	38
2.3.2	Defining Text Styles	41
<b>Chapter 3</b>	<b>Working with Points</b>	<b>43</b>
3.1	Lesson: Introduction to Point Data	44
3.2	Lesson: Importing a Text/ASCII File	46
3.2.1	Importing a Text/ASCII File	50
3.3	Lesson: Point Defaults	55
3.3.1	Setting Up Point Defaults	58
3.4	Lesson: Draw - Locate Points	60
3.4.1	Draw Points in a Drawing	63
3.4.2	Creating new Points with Draw – Locate Points	66
3.5	Lesson: Controlling Point Display	69
3.5.1	Scaling Attributes	72
3.5.2	Moving Attributes	74
3.5.3	Editing Specific Attributes	75
3.6	Lesson: Editing Point Data	77
3.6.1	Editing Point Data with the Edit Points command	79
3.6.2	Editing Point Data with the Edit Point Attributes command	80
3.7	Lesson: Erasing Points	83
3.7.1	Erasing Point Blocks from a Drawing	84
3.7.2	Deleting Point Data from the External Point Database	87
3.8	Lesson: Using Point Groups	89
3.8.1	Creating a Point Group	92
3.8.2	Drawing Points by Point Group	95

<b>Chapter 4</b>	<b>Working with Surfaces</b>	<b>99</b>
4.1	Lesson: Introduction to Surfaces	100
4.2	Lesson: Preparing Surface Data	102
4.2.1	Creating a New Drawing for the Surface	106
4.2.2	Creating a Point Group to Be Used As Surface Data	109
4.2.3	Creating a Point Group to Connect with 3D Polylines	112
4.2.4	Drawing 3D Polylines by Point Number	114
4.2.5	Drawing 3D Polylines by Point Selection	118
4.3	Lesson: Using Triangulate and Contour	121
4.3.1	Using Triangulate and Contour	127
4.4	Lesson: Working with Contour Labels	134
4.4.1	Adding Contour Labels	136
4.4.2	Moving Contour labels	137
4.4.3	Masking Contour Labels	137
4.5	Lesson: Viewing Surfaces	139
4.5.1	Using the Surface 3D Viewer	142
4.5.2	Using the Supersonic Viewer	144
4.6	Lesson: Editing Surfaces	145
4.6.1	Editing a Surface with the Surface Manager	148
4.7	Lesson: Surface Inquiries	153
4.7.1	Quick Profile	155
4.7.2	Creating Spot Elevations	158
4.7.3	Using the Drawing Inspector to show Surface Elevation	160
4.7.4	Slopes Zone Analysis	161
<b>Chapter 5</b>	<b>Basic CAD Drawing and Editing in Carlson Software</b>	<b>165</b>
5.1	Lesson: Introduction to Basic CAD Drawing and Editing	166
5.2	Lesson: Basic Cad Drawing and Editing	178
5.2.1	Initial Drawing Setup	179
5.2.2	Drawing Polylines by Point Group	183
5.2.3	Edit a polyline	185
5.2.4	Drawing an Arc	186
5.2.5	Draw a 2D Polyline from points	186
5.2.6	Offset a Polyline	187
5.2.7	Extending and Trimming Entities	188
5.2.8	Lengthen a Line	189
5.2.9	Drawing Lines by Angle and Distance	189
5.2.10	Draw Polyline by Nearest Found	192

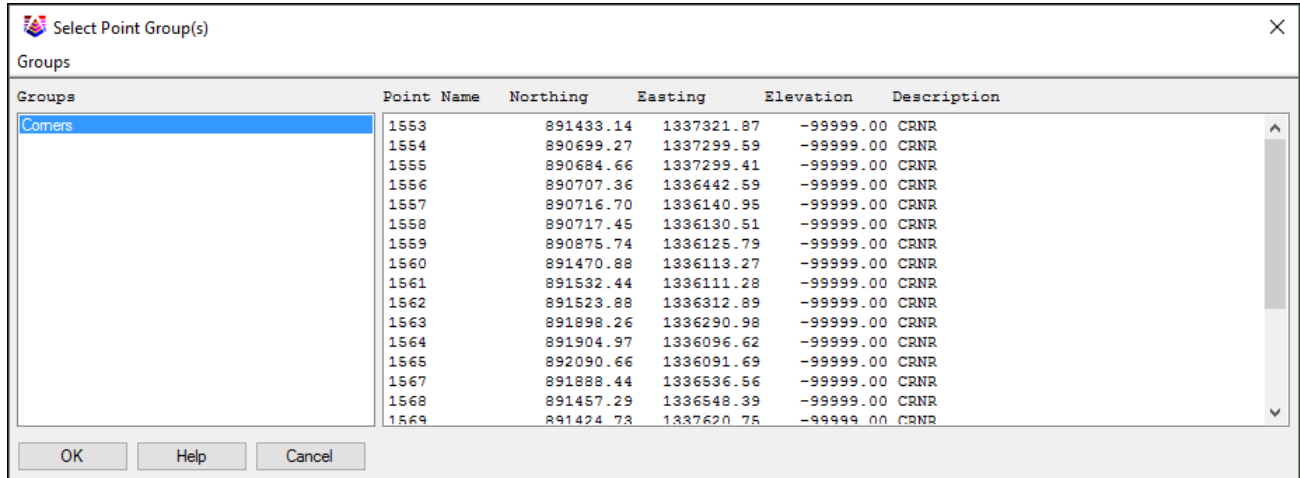
5.2.11	Adding Symbols.....	193
5.2.12	Drawing a Rectangle .....	195
5.2.13	Drawing Special Line Types .....	195
5.2.14	Inserting an External DWG File.....	197
5.3	Lesson: Drawing Presentation and Creating a Final Plan .....	199
5.3.1	Drawing Orientation.....	203
5.3.2	Adding Text .....	204
5.3.3	Drawing a Hatch Pattern (with AutoCAD) .....	209
5.3.4	Drawing a Hatch Pattern (with IntelliCAD) .....	211
5.3.5	Drawing Variable Offsets.....	213
5.3.6	Create/Change Layers by Selection.....	214
5.3.7	Adding Dimensions and Leaders .....	215
5.3.8	Drawing a Border and Title Block.....	220
5.3.9	Adding a North Arrow .....	222
5.3.10	Adding a Bar Scale.....	224
<b>Chapter 6 -</b>	<b>More Essential Tools .....</b>	<b>225</b>
6.1	Lesson: Using Drawing Cleanup.....	226
6.1.1	Using Drawing Cleanup.....	228
6.2	Lesson: Labeling Lines .....	230
6.2.1	Set Linework Label Linking.....	236
6.2.2	Annotate Defaults .....	238
6.2.3	Auto Annotate.....	240
6.3	Lesson: Annotative Text and Points .....	242
6.3.1	Setting up Annotative Text and Points .....	243
6.3.2	Annotate the Plan .....	247
6.3.3	Change the Annotative Scale.....	249
6.4	Lesson: Working with Centerlines.....	250
6.4.1	Define a Centerline .....	253
6.4.2	Edit a Centerline .....	254
6.4.3	Station a Centerline .....	257
6.4.4	Export a Centerline .....	259
6.5	Lesson: LandXML Export/Import .....	260
6.5.1	LandXML Export.....	263
6.5.2	LandXML Import.....	265
6.6	Lesson: Google Earth Export/Import.....	270
6.6.1	Google Earth Export .....	272
6.6.2	Google Earth Import .....	274

6.7 Lesson: Working with Quick Keys .....	276
6.7.1 Creating Quick Keys .....	278
6.8 Lesson: Working with the Symbol Library .....	280
6.8.1 Editing the Symbol Library .....	282
6.9 Lesson: Importing Esri SHP Files.....	286
6.9.1 Configure GIS Settings .....	288
6.9.2 Import Esri SHP .....	290
6.9.3 Viewing the GIS Data.....	294
6.10 Lesson: Place Image by World File.....	297
6.10.1 Place Image by World File .....	300
6.11 Lesson: Working with Civil 3D Data .....	302
6.11.1 Create a Drawing with Civil 3D Point Objects.....	303
6.11.2 Import a Drawing with Civil 3D Data .....	304

### 3.8 Lesson: Using Point Groups

#### Introduction

In this lesson we look at the use of Point Groups to organize your point data, and some of the subsequent uses of those groups.



#### Key Concepts

Concepts and key terms covered in this lesson are:

- Point Groups
- Filters
- Applications of Point Groups

#### Objectives

After completing this lesson, you will be able to:

- Learn what Point Groups are
- Learn how to Create Point Groups
- Learn various applications of Point Groups

## Advantages of using Point Groups

Point Groups are a powerful and versatile tool to organize your point data. Some uses of Point Groups include:

- Controlling Point Display
- Editing Points
- Drawing Points
- Field to Finish
- Selecting Points to build a Surface
- Exporting specific Points
- Creating Point Tables
- Generating Reports

## Creating Point Groups

Point Groups are saved selection sets of points. They can be created by setting up a query (or filter) that sorts through all the points in the current .CRD and selects the ones that match the criteria. Point groups can be based on a variety of criteria including point numbers, point elevations, point descriptions and logical combinations thereof.

The *New Point Group* dialog box consists of an *Include* tab and an *Exclude* tab. First the filtering criteria specified on the *Include* tab is applied to the entire current coordinate file. The resulting list of points is created and held in memory. Note that on the *Include* tab, all specified filter criteria must be met for a point to be included.

Components of the Query can include any combination of:

- A Range of point numbers, selected from the Drawing or the .CRD, found in the Drawing or the .CRD that fall within a drawn Circle, or found within the Drawing or the .CRD within a drawn Polyline
- Elevation Range
- Descriptions
- All Points in the database

Next, the filtering criteria specified on the *Exclude* tab is applied to that temporary list. Any points in the list that match the exclude criteria are removed from the list to create the final Point Group.

On the *Exclude* tab, the user specifies whether the points to be excluded must match *All* of the filter criteria, or *Any* of the filtering criteria. Using all of these variables in different combinations can produce a very specific set of points.

Components of the Query can exclude any combination of:

- A range of point numbers, using the same methods as described for Include
- Elevation Range
- Descriptions

### How Point Groups Work

The parameters that define Point Groups are stored in files with a .GRP file extension, and the same filename as the .CRD coordinate file they are to be applied to. Each Point Group file is associated with one and only one CRD file, as determined by the filename. For example, Test.grp will only refer to points in Test.crd in the same directory.

Each Point Group file contains a number of Point Groups. Each Point Group contains rules for selecting the points within the \*.crd file. This file is not intended to be edited manually. The Point Group Manager in Carlson Software is the correct tool to use to edit the Point Group rules and/or to add or remove Point Groups.



Point Groups are dynamic, inasmuch as the .CRD file is read in its current state whenever Point Groups are employed. So if Points that belong in a specific Point Group are added to or deleted from the .CRD, the next time Point Groups are used, they will be updated to the current state of the .CRD.

### Exercises: Working with Point Groups

In these exercises you create a Point Groups, using filtering of descriptions, and then use the new Point Group with *Draw-Locate* to draw that specific set of Points in the Drawing.

You do the following:

- Create a Point Group
- Draw a Point Group

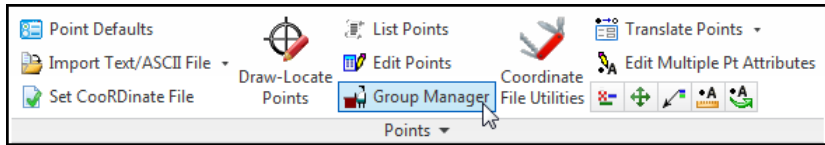
#### 3.8.1 Creating a Point Group

1. Continue working in the drawing **Basemap.dwg**.

If you have not completed the previous lessons:

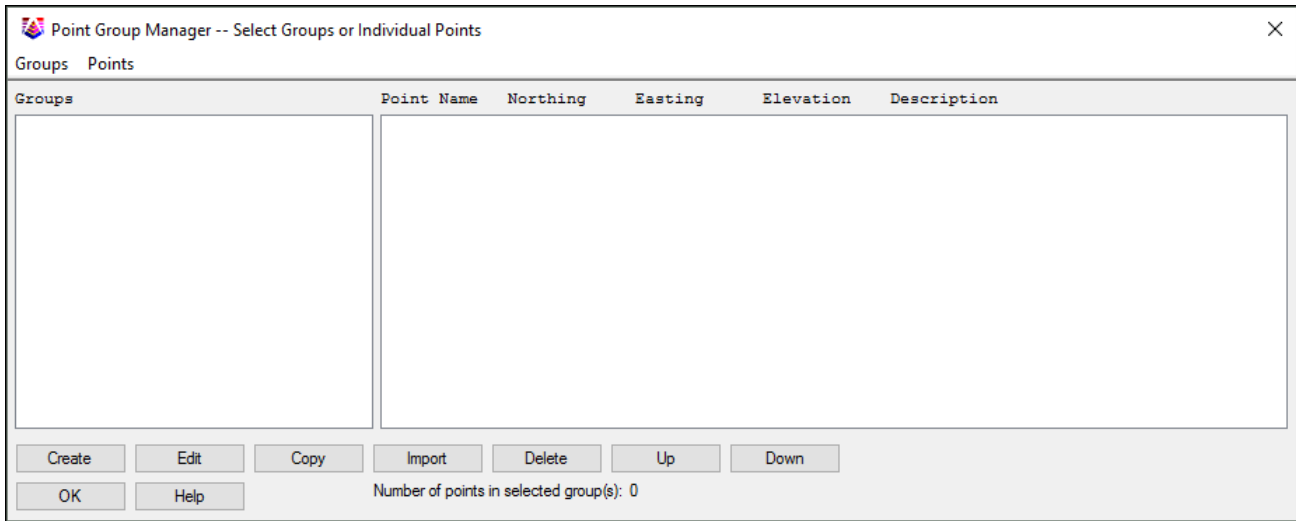
Open *3\_8.dwg* from the project folder *APG 2018 Lesson 3\_8*.

2. Select **Ribbon: Points**  
⇒ **Points** ⇒ **Group Manager**.

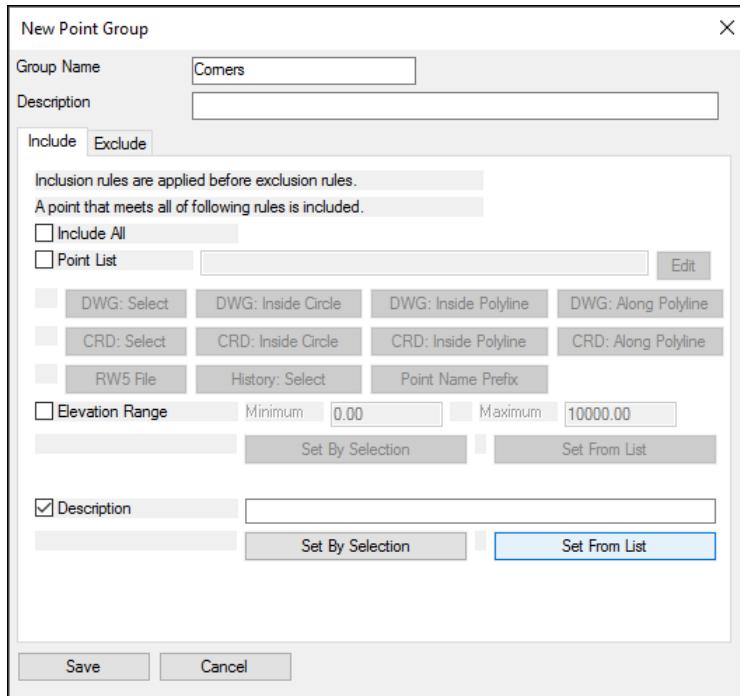


Alternatively, from the pull-down menu:  
Select **Points** ⇒ **Point Group Manager**.

The *Point Group Manager* opens.

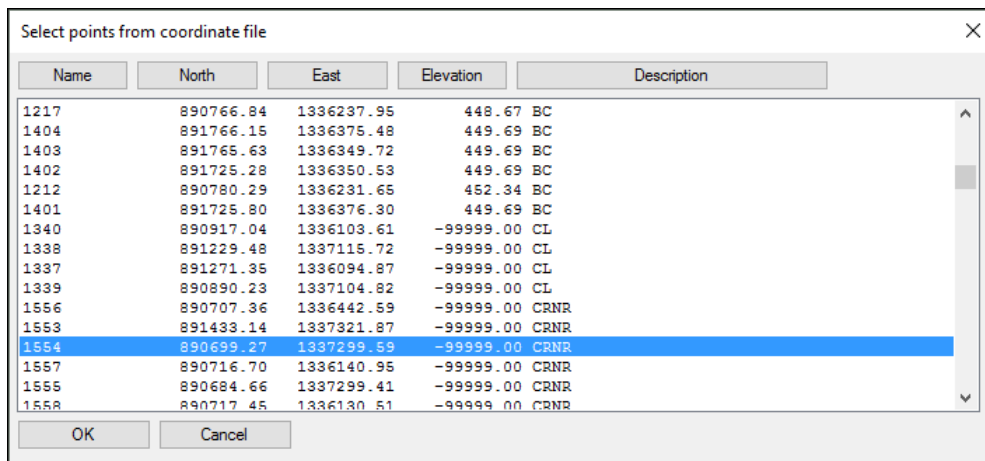


3. Click <<**Create**>>.



4. In the *New Point Group* dialog box for the **Group Name** enter **Corners**.
5. On the *Include* tab disable **Include All**.
6. Enable **Description**.
7. Click <<**Set From List**>>.

This opens the *Select points from coordinate file* dialog box. Here you can see all the points in the current .CRD file, sort them, and select the descriptions that you want to use to create the point group. It saves time and reduces errors by allowing you to see the description of points that are in the point database so you don't have to type them in from memory.



8. Click <<**Description**>> to sort the list by the description.
9. Find a point with a **CRNR** description and select it.
10. Click <<**OK**>>.

**New Point Group** [X]

Group Name:

Description:

Include  Exclude

Inclusion rules are applied before exclusion rules.  
A point that meets all of following rules is included.

Include All

Point List

DWG: Select  DWG: Inside Circle  DWG: Inside Polyline  DWG: Along Polyline

CRD: Select  CRD: Inside Circle  CRD: Inside Polyline  CRD: Along Polyline

RW5 File  History: Select  Point Name Prefix

Elevation Range Minimum:  Maximum:

Description

11. Back in the *New Point Group* dialog box click <<**Save**>>.

**Point Group Manager -- Select Groups or Individual Points** [X]

Groups Points

Groups	Point Name	Northing	Easting	Elevation	Description
Corners	1553	891433.14	1337321.87	-99999.00	CRNR
	1554	890699.27	1337299.59	-99999.00	CRNR
	1555	890684.66	1337299.41	-99999.00	CRNR
	1556	890707.36	1336442.59	-99999.00	CRNR
	1557	890716.70	1336140.95	-99999.00	CRNR
	1558	890717.45	1336130.51	-99999.00	CRNR
	1559	890875.74	1336125.79	-99999.00	CRNR
	1560	891470.88	1336113.27	-99999.00	CRNR
	1561	891532.44	1336111.28	-99999.00	CRNR
	1562	891523.88	1336312.89	-99999.00	CRNR
	1563	891898.26	1336290.98	-99999.00	CRNR
	1564	891904.97	1336096.62	-99999.00	CRNR
	1565	892090.66	1336091.69	-99999.00	CRNR
	1567	891888.44	1336536.56	-99999.00	CRNR
	1568	891457.29	1336548.39	-99999.00	CRNR
	1569	891424.73	1337620.75	-99999.00	CRNR

Number of points in selected group(s): 23

12. In the *Point Group Manager* notice the new point group Corners. It contains 23 points and is limited to points with the description CRNR.

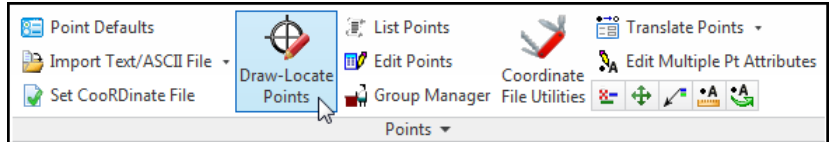
13. Click <<**OK**>>.

### 3.8.2 Drawing Points by Point Group

1. Continue working in the drawing from the previous exercise.
2. From the pull-down menu: Select **Points** ⇒ **Erase Point**.
3. At the command line respond to the prompts as follows:
4. Select points from screen, group or by point number [<Screen>/Group/Number]? **S**
5. Graphically select all the points in the drawing and press **Enter**.
6. Delete points from coordinate file [Yes/<No>]? **N**
7. Delete point symbols [<Yes>/No]? **Y**

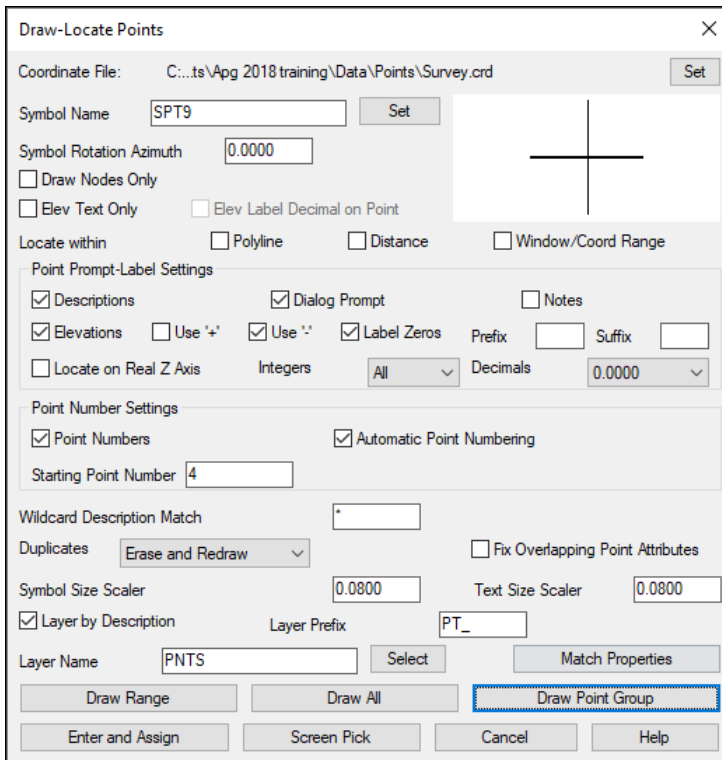
All the points are now removed from the drawing, however, they still exist in the point database.

8. Select **Ribbon: Points** ⇒ **Points** ⇒ **Draw – Locate Points**.



Alternatively, from the pull-down menu:  
Select **Points** ⇒ **Draw – Locate Points**.

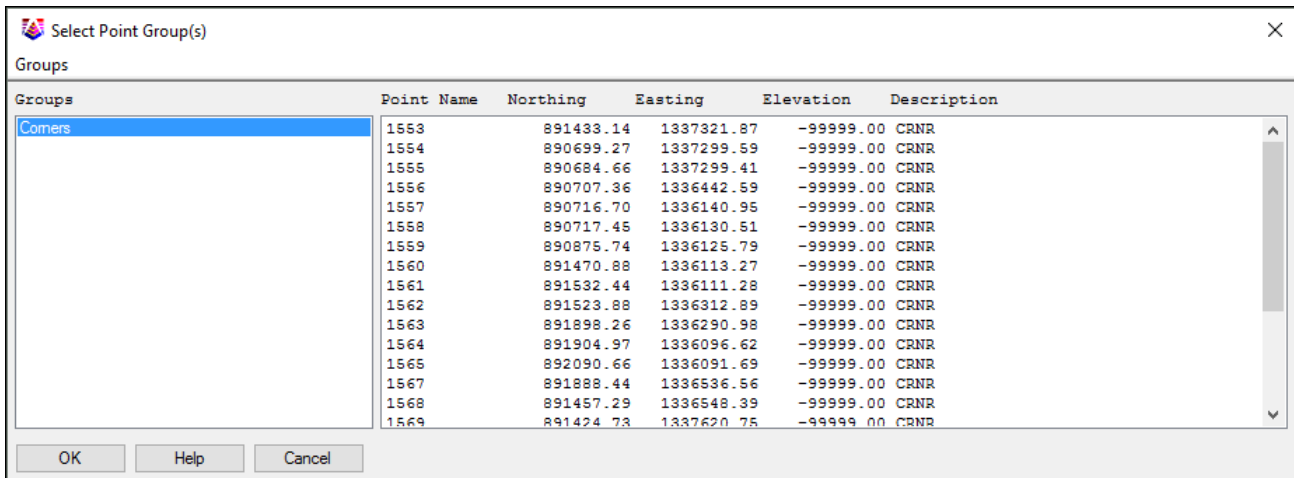
The *Draw-Locate Points* dialog box opens.



Many of the settings within the *Draw-Locate Points* dialog box are already set to the choices you made in the *Point Defaults* dialog. However, they can be changed here, and the changes will be used for this specific point creation.

9. Confirm **Layer by Description** is enabled.
10. Confirm the **Layer Prefix** is set to **PT\_**.
11. Confirm the remaining settings are set like the graphic above.
12. Click **<<Draw Point Group>>**.

This opens the *Select Point Group(s)* dialog box. Here you can select one or more point groups to draw into the drawing.



13. Confirm the point group **Corners** is selected.

14. Click <<OK>>.

Only the points representing corners are created in the drawing and should look like the graphic below.



### Lesson Review

In this lesson you learned about using *Points Groups* in *Carlson Software*. First you created a *Point Group* by including all the points in the .CRD file with a certain description. Then you used that *Point Group* to draw the points into the drawing.

### Chapter Review

In this chapter you learned about many aspects of working with points in *Carlson Software*. You looked at the use of the external point database, the coordinate file, known as the Carlson .CRD file. You also learned about several methods for the creation of point blocks in the drawing to represent the records in the external point database. You then learned how to edit the point blocks in the point data, how to erase point blocks and point data.

A solid understanding of the use of points in Carlson is essential. Practice these exercises and try other commands on the points menu that we did not cover. You are on your way to becoming a Carlson Software master and being a master of points is a solid step along the way.

Next we look at creating Surfaces using points and break lines.